



Accounting & Financial Women's Alliance

2020-2021 Impact Report



Accounting & Financial Women's Alliance
CONNECT • ADVANCE • LEAD



IN THIS REPORT

2	Headquarters
3	Message from the President// Message from the Executive Director
4	National Board of Directors//Early Career Initiative
5	AFWA By The Numbers//Local Chapters
6	Connect.Advance.Lead. Conference//Social Media
7	Lifetime Members//Emeritus Members//Corporate Members
8	Member and Chapter Awards
9	Women Who Count National Conference
10	The Foundation of AFWA
11	Scholarship Recipients
12	Donors to the Foundation of AFWA
13	Past National Presidents
14	FY21 Financial Report
15	Corporate Partners and Alliances

/ Empowerment | Leadership | Integrity | Passion |



AFWA Headquarters

2365 Harrodsburg Rd, Ste A325
Lexington, KY 40504

p: 859.219.3532
e: AFWA@AFWA.org
web: www.AFWA.org

Headquarters Staff

Executive Director: Cindy Stanley
Director of Marketing & Operations:
Catherine Schaefer
Membership Specialist: Mary Marshall
Membership Coordinator: Lesley Laws
Member Services: Kara Hamilton
Member Services: Onyinyechi Okorie



Message From the President

Tyna Gaylor
2020-2021 AFWA
National President

COVID was a game changer and a dramatic interrupter of our audacious goal to end the year with 1,600 members. Sadly, we lost 140 members, ending the year with 1,152. Regardless of COVID, the Board continued to focus on Members and Money.

Responding to the virtual environment, member benefits were enhanced with 12 annual hours of professional development education webinars eligible for CPE credit. Not stopping there, several technical sessions in nonprofit and tax were offered at a low member rate to assist members who benefit from intermediate level education. Differentiation between member and nonmember registration provided opportunity to increase revenue as well as introduce AFWA to nonmembers by inviting them to participate in AFWA's quality educational webinars. Do you forward AFWA professional education invitations to your network?

As planned, a virtual chapter, Coast to Coast Connections or C2C launched, offering monthly opportunities for members without local chapters to meet one another and develop the friendships and connections valued by our membership. All are welcome. Check out the Events Page and join the fun!

Corporate Partner revenue increased after the Premiere Partner Program was added to the AFWA website illustrating the benefits of various levels of support. Have you shared this program with your employer or considered it for practice?

To achieve Board goals, volunteers were invited to participate on Board committees. Their time and talents propelled many important initiatives forward and provided them with insight into the Board's strategic plan as well as the opportunity to affect AFWA's future. Have you considered volunteering at the National level?

Virtual was the name of the game and the 2020 Women Who Count and 2021 Leadership conferences were offered virtually, as was the 2020 Annual Business Meeting, countless board and committee meetings, and more. We experienced a learning curve that required good humor, a willingness to try new things, flexibility, adaptability, and occasionally some technical savvy. Oddly, we may find that this year strengthened AFWA by forcing us to embrace new ideas and ways of doing things and laying a new foundation upon which to grow.



Message From AFWA Executive Director

Cindy Stanley
AFWA Executive Director

Through positivity, creativity, and innovation, AFWA has embarked on a journey through a virtual environment for the past two years during the pandemic. The staff and membership have embraced the challenges as conferences and meetings have been held virtually with a great deal of success and participation from members. As the landscape begins to shift toward more in-person venues and social functions, AFWA will continue to expand the idea of creating a unique experience for every member by increasing membership and connecting women in the field of accounting and finance through leadership, education, and networking.

The past year included an increase in membership for several chapters, who despite the virtual gatherings managed to get new members involved in the AFWA experience. Many chapters also held successful virtual events including hosting cooking classes, book clubs, and a wealth of educational venues. Membership and chapter growth have been a key focus this year, including adding increased value to the membership experience.

The second annual Connect.Advance.Leader Leadership Conference was also held virtually this year in June. Attendees enjoyed a wide array of engaging speakers, educational, and networking opportunities at the two-day conference which will be held in-person next year in Lexington, Kentucky, the home of AFWA headquarters.

AFWA's premier event, the Women Who Count Conference, was held on October 18-22 and included five fun-filled days of education and entertainment for attendees. The conference, which included up to 20 CPE credits, also had a wealth of fun and festivities. The Foundation Fun Night, which raised scholarship funds for the Foundation of AFWA scholarship, provided a mentalist magician for the entertainment of attendees. The Foundation Fundraising Silent Auction gave bidders a chance to purchase some high-quality donated items with proceeds going toward the scholarship fund. The MOVE Project report, focusing on the recovery of women in the workplace following the pandemic, was released and promoted during the conference. Although the virtual experience has been a positive one, AFWA members and staff are looking forward to seeing everyone in person at the Women Who Count Conference in Chicago next year.

Membership and chapter growth will continue to be a focus for AFWA in the coming year along with increasing membership value, education, leadership opportunities and communication. AFWA members are leaders in their companies and communities. They have earned the trust and respect of their clients and peers and show enthusiasm in their career for the accounting and finance professions. AFWA membership is an investment in you!



AFWA National Board of Directors 20-21



Tyna Gaylor: National President
Stephanie Searcy: President Elect

Wendi Christian CPA, CISA, CITP,
CGMA: Vice President

Shelby Williams, CPA: Vice President

Jessica Perkins: Treasurer

Madeline Trimble: Director

Stephanie Sommers: Director

Marie Ramkey, CPA: Director

Guinevere Moore: Director

Amy Landry: Director

Nicole Hopkins: Director

Laura Mangan, CPA, CMA, MBA:
Immediate Past President

Early Career Initiative

The Early Career Initiative is a volunteer group created to ensure the voice of emerging leaders is heard and utilized within the national organization. Members of the ECI are working to grow young professional membership within AFWA by developing programs and initiatives specifically designed to meet the needs of the modern accounting and finance professional.

Early Career Members are classified as:

- Members with less than 10 years of professional experience,
- Members under 35 years of age, or
- Members who are currently part-time or full-time students



ACCOUNTING & FINANCIAL WOMEN'S ALLIANCE

EARLY CAREER PROFESSIONALS



1,178

Accounting & Finance
Professionals Nationwide

63

Nationwide Chapters
& Networks

359

New Members in FY21

\$110,720

Cash Scholarships Awarded by
the Foundation of AFWA and
AFWA Chapters

104

Lifetime Members

204

CPE hours offered in NASBA year
2021 through local chapter events,
national conferences, and webinars.

- Ames Chapter
- Atlanta Chapter
- Billings Chapter
- Birmingham Chapter
- Buffalo Chapter
- Casper Chapter
- Central Arkansas Chapter
- Central Florida
- Central New York Chapter
- Chattanooga Chapter
- Dallas Chapter
- Denver Chapter
- Des Moines Chapter
- District of Columbia (DC) Chapter
- East Bay Chapter
- El Paso Chapter
- Flagstaff Chapter
- Fort Walton Beach Chapter
- Fort Worth Network
- Grand Rapids Chapter
- Greater Baltimore Network
- Greenville Chapter
- Houston Chapter
- Huntsville Chapter
- Illinois State University
- Indianapolis Chapter
- Jackson Chapter
- Jackson Hole Network
- Kansas City Chapter
- Knoxville Chapter
- Kokomo Chapter
- Los Angeles Chapter
- Louisville Chapter
- Mesa East Valley Chapter
- Milwaukee Chapter
- Minn/St. Paul Network
- Music City Chapter
- New Orleans Chapter
- New York Chapter
- Northeast Florida
- Oklahoma City Chapter
- Omaha Chapter
- Orange County Network
- Philadelphia Chapter
- Phoenix Chapter
- Pittsburgh Network
- Raleigh Chapter
- Richmond Chapter
- San Diego Chapter
- San Francisco Chapter
- Santa Barbara Chapter
- Seattle Chapter
- Silicon Valley Chapter
- Spokane Network
- Springfield Chapter
- Tacoma Chapter
- Tampa Network
- Troy Chapter
- Tulsa Chapter
- Virtual Chapter
- West Alabama Chapter
- West Palm Beach Chapter
- Wichita Chapter

**Accounting & Financial
Women's Alliance**
connect | advance | lead



**We are the Women
Who Count**

Industry Professionals from across the country attend AFWA's Women Who Count Conference to become more knowledgeable on industry trends and gain a competitive edge with leadership development. Conference veterans and new attendees alike join to connect with each other, gain insight and inspiration and celebrate the AFWA experience.



Accounting & Financial Women's Alliance
CONNECT • ADVANCE • LEAD

Getting Social

AFWA also relies on social media as a consistent communication platform for members. We encourage members and chapters to build online communities and pass down news as it happens.

Facebook: 4,009 likes/follows

Twitter: 912 followers

LinkedIn: 3,300 connections

Instagram: 552 followers



ACCOUNTING & FINANCIAL

CONNECT.ADVANCE.LEAD.™

VIRTUAL CONFERENCE

LEADING WITH A PURPOSE

JUNE 17-18, 2021

Connect.Advance.Lead. Conference

The second virtual AFWA Connect.Advance.Lead Conference was held on June 17-18, 2021 with resounding applause from all attendees and speakers who participated in this one-of-a-kind event. Attendees were able to network and advance their leadership and education skills with a line-up of powerful, engaging speakers, entertainment, and receive up to nine CPE credits.



Lifetime Members

In an effort to emphasize membership commitment, reward long-time members, and generate revenue, AFWA announced a Lifetime Member campaign in May 2015. The campaign capped with 104 Lifetime Membership commitments.



ALANNA ABREU	CINDY DUDDEN	PATTI MANN	
SUSAN ADAMS	SUSAN DURR	VICKI MAY	
ALISON ALDRICH	KATHERINE EASTHAM	LEIGH-ANNE MCCLURE	
CATHY ALLEN	DANA FREELAND	PAMELA MEADOWS	BARBARA SAEUGLING
DIANE ALLISON	ANDREA GARCIA	TASSIE MEDLIN	MELISSA SAGER
CORNELIA ALSHEIMER	TYNA GAYLOR	RENEE MELVILLE	KATHRYN SCHRADER
PATRICIA ANGELL	VIRGINIA GEIGER	DEBBIE MICHAEL	STEPHANIE SEARCY
SYLVIA AYERS	KAY GOTSHALL	MONIKA MILES	VICKI ALBERS
SUSAN BARNA	TRISHA GROSCH	VIVIAN MOLLER	GINA SLACK
DESSIMA BARNWELL	EDRONDA GUIRIBA	BROOKE MORELAND	STEPHANIE SOMMERS
MARIA BEECHAN	KAREN GUNTHER	DANIELLE MOWERY	KATHRYN SOUTHARD
ANAT BORODYANSKY	KELLY HADEN	EMILY NAVE	GRACE STATEN
BERRANTHIA BROWN	WENDI HALL	ANN NESHEK	PENELLE STRUM
JEANETTE CAMBRON	LINDA HARRIS	MELANIE NORTON	INGRID SWENSON
MARY LOU CARVER	KARYN HARTKE	CHRISTI OLSEN	BRENDA SWINEY
TARA CHAMBERS-CAMP	ANGELA HESTER	SARA PAGE	JOANN TUCKER
ANNETTE CHRISTENSEN	ASHLEY HUSS	LISA PALMERSHEIM	MICHELLE VENUS
SUE CHRISTENSEN	MARY JOHNSTON	PAULOMI PATEL	LISA VOLLERT
WENDI CHRISTIAN	LORI KELLEY	DIANNA PATTON	ANNA VON STRAUSSENBURG
SHANNON COMSTOCK	MELODY KING	JESSICA PERKINS	BAMBI WEBER
MARY-CLAIRE CORCORAN	GALE KREITZBERG	RENEE POLLEY	JOAN WEISHAUPL
BARBARA COVINGTON	PHYLLIS KRUSH	MARIE RAMKEY	PAMELA WENNER
STACEY CRAIG	SHAWNDELL LAFOLLETTE	RENEE RICHARDS	SHELBY WILLIAMS
KRISTIN CULLITON	CHRISTIE LININGER	CAROLYN RICHIE	FELICE ZALK
ANN DEEGAN	KIMBERLY LYONS	STEPHANIE ROSCOE	PHYLLIS MARTIN
DARCELLE DIXON-HUNT	HELEN MALEADY	MORGEN ROSE	
CARRIE DOSTAL	LAURA MANGAN	DEBORAH ROSENGARTEN	

Emeritus Members

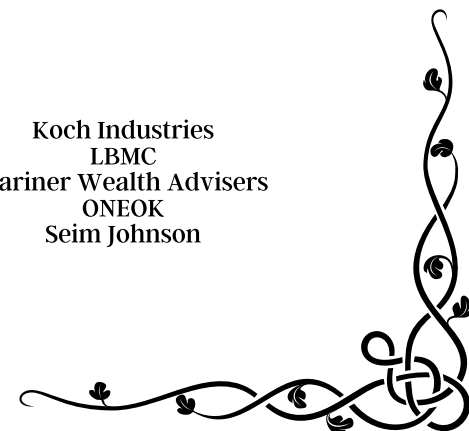
In 2016, AFWA began to recognize long-term members with an official Emeritus Status. Emeritus members may apply for the status if they have been a member of AFWA for at least 30 years and are at least 70 years old. Emeritus members are free of National Membership dues. We recognize the following Emeritus Members as of October 2021.

Dorothy Ashley	Margaret Farr	Ruth Nowicky	Carol Strommer
Ilse Beck	Nancy Gililand	Wylena Raymond	Myra Swick
Harleen Kay Brandon	Rose Marie Gwinner	Janet Redick	Marilyn Vito
Rochelle Caballero	Joyanna Hammond	Karin Riggins	Eleonore Williams
Carolyn Casselbury	Eunice Helgeson	Jane Rose	Maria Wong
Constance Clausen	Jean Hurkett	Carol Shelbrack	Catherine Yekenevicz
Carol Drinnon	Paula Marchand		

Corporate Members

Businesses and firms who join multiple members in AFWA can earn discounts on membership as well as other special benefits. Not only do Corporate Members gain National Membership, but employees can join local chapters across the country. Thank you to our Corporate Members!

Level 3 Corporate	Level 2 Corporate	Level 1 Corporate	Koch Industries
Grant Thornton	BKD LLP	Bland & Associates	LBMC
KPMG	Becker	Bowers and Company	Mariner Wealth Advisers
ADP		Dannible & McKee	ONEOK
RobertHalf		Dixon Hughes Goodman	Seim Johnson
Protiviti		Elliott Davis, LLC	
Sage		Fust Charles Chambers	
FDIC		Iowa Clinic	
Wiley		JamisonMoneyFarmer	



AFWA's Women Who Count Awards

At the annual Women Who Count Conference each year, the Accounting & Financial Women's Alliance proudly recognizes outstanding women who uphold the mission of AFWA, demonstrate excellence in their communities and careers, and positively influence others.

AFWA is proud to present the annual award winners announced at the virtual Women Who Count Conference held on October 22. A heartfelt congratulations to all of the individual and chapter award winners--the full list of award winners below:



Academic Award:
Cheryl Heitz



Outstanding Achievement:
Katie Minion



Student Award:
Tyrah Sexton



Emerging Leader Award:
Brittany Carman



Leadership Award:
Carolyn Sweeney



Industry Professional Award:
Deanah O'Donnell



Public Practice Award:
Ty Hendrickson



Small Business Award:
Andrea Garcia



President's Award:
Kathryn Seltman

AFWA Chapter Achievement

- Membership: Tulsa Chapter
- Communications: Kansas City Chapter
- Programming: Des Moines Chapter
- Scholarship: District of Columbia Chapter

AFWA Chapter Milestones

- 30 years of service—AFWA Mesa East
- 40 years of service – AFWA El Paso Chapter
- 65 years of service – AFWA West Palm Beach
- 65 years of service – AFWA Chattanooga Chapter
- 65 years of service – AFWA Birmingham Chapter
- 70 years of service – AFWA Kansas City
- 70 years of service – AFWA Central New York Chapter
- 80 years of service – AFWA Los Angeles Chapter
- 80 years of service – AFWA Seattle Chapter



ACCOUNTING & FINANCIAL WOMEN WHO COUNT VIRTUAL CONFERENCE

OCT. 18-22, 2021



#WomenWhoCount
@afwanational



Industry professionals from across the country attended the virtual Women Who Count Conference, Oct. 19-22, to celebrate the AFWA's 83rd year from the comfort of their homes. Accounting and finance professionals came together for three days of networking, education, and fun events. The 2021 Conference featured over 39 speakers and 20 CPE credits covering topics on accounting, tax, finance, leadership, communication and more, recognized the professional and chapter award winners, and raised valuable scholarship funds for The Foundation through Foundation FunNight and The Foundation for AFWA Fundraising Auction. Conference veterans and new attendees alike joined to connect with each other, gain insight and inspiration and celebrate the AFWA experience.

Thank you to our 2021 Women Who Count Sponsors and Exhibitors!



DARE TO LEAD:
GETTING OUT OF
YOUR OWN WAY

Women Who Count

October 19 at 7:30pm EST
with Nikita Pearson.
[Register Today!](#)



Accounting & Financial Women's Alliance
CONNECT • ADVANCE • LEAD



WOMEN WHO
COUNT SPEAKER
SPOTLIGHT

Becker+



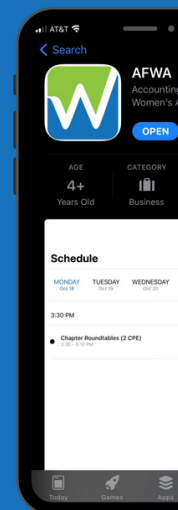
JEANNINE K
BROWN

MANAGING DIRECTOR
OF EVERYDAY LEAD,
BECKER INSTRUCTOR

EXCLUSIVE SNEAK PEEK:
ON THE NEW
AFWA APP

DOWNLOAD OUR MOBILE APP

Join us.
at [afwa.org](#)



Accounting & Financial Women's Alliance

@AFWANATIONAL

The Foundation of AFWA 20-21

Foundation Board of Directors

Chair – **Stacey Craig**
Vice Chair – **Melissa Sager**
Treasurer – **Sara Page**
Secretary – **Wendi Hall**
Director – **Gale Kreitzberg**
Director – **Michelle Venus**
Director – **Anna Raney**
Director – **Alanna Abreu**
Director – **Jevonne Shepherd**
Director – **Anat Borodyansky**
Director – **Monica Malaski**
Director – **Katharine Dill**
Immediate Past Chair – **Pam Wenner**

Exam Prep Applications now
open! Visit
www.afwa.org/scholarship/

Surgent
WHERE PROS GO TO KNOW

WILEY

Join us for this exciting event with
Magician/Mentalist, Brice Harney!
THIS IS A TICKETED EVENT - CLICK
HERE TO PURCHASE!

AFWA
FOUNDATION
FUN NIGHT

21 at 7:30pm EST

Congratulations to our
2021-2022 Scholarship
Recipients

Tyrah Sexton
Halle Sheley
Audrey Wagner
Suong Nguyen
Nikki Ngo
Meaghan Ruttan
Skyler Toy
Marissa Edelman
Nicole Maimon
Gabriela Barcelos de Freitas
Emily Reid
Shea Roccaforte

*Be a part of someone
else's success story!*

HELP SUPPORT THE FOUNDATION OF AFWA!

A message from 2020-21 Foundation Chair, Christie Lininger

Thank you for your support in the Zoom year. We can't thank you enough for participating as we learned how to navigate fundraising online.

This year we introduced game night. We hosted several virtual game nights that included bingo and trivia. The game nights were fun and competitive. It was a way to support the Foundation and socialize at the same time. It was a win. Next, we learned how to hold a silent auction and our fun night virtually. It was a learning curve but thanks to those that donated baskets, those that bought baskets and those that just donated money we had a successful auction. Our first virtual fun night was a comedian followed by a scavenger hunt. The laughs were a welcome relief. The scavenger hunt was a great way to close out the evening.

We are happy to report that we accomplished several internal goals this year. The first goal was to finish the strategic plan. The plan has been completed and will serve as a working framework for the Board in the year to come. The second internal goal was to work with Associations International on creating reports that help the Foundation with some metrics that will enhance our fundraising efforts and our ability to recognize our donors. We have completed our review and have the plan in place for better tracking. We are the process of establishing an endowment so that we can ensure that the Foundation can continue to make a difference for years to come.

Our mission to provide scholarships for education and career development was on track this year. We again were able to award eight undergraduate, three master's scholarships and one Paula Zanni scholarship. We awarded review course and certification scholarships as well as National dues reimbursement scholarships. The scholarship committee is made up of board members and volunteers. We invite you to volunteer to participate in the scholarship review process.

Thank you to the dedicated and innovative members of the Foundation Board and to Association International for being resilient in a year filled with obstacles. Your efforts helped strengthen the Foundation and set it on the path for future growth.

The Foundation is here today because of the incredible women that came before me. They generously contributed their time, money and expertise for the benefit of others. The leaders before me had the foresight to create the Foundation so that we can pay it forward. I invite you to be a part of the Foundation and to be one of the many that help pay it forward. Please consider applying to be a board member or volunteer to be on a committee. As my friend says "if everyone gives a little, no one has to give a lot."

Thank you for giving this year. We appreciate you.

Scholarship Recipients



**Nikki Ngo - Metropolitan State
University of Denver**



**Tyrah Sexton - Illinois State
University**



Emily Reid - Gonzaga University



**Marissa Edelman - Wichita State
University**



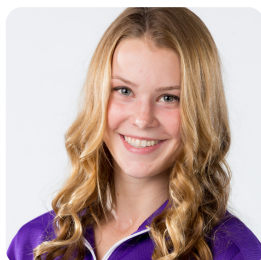
**Gabriela Barcelos - Southern
Methodist University**



**Nicole Maimon - University of
Illinois at Urbana-Champaign**



**Halle Sheley - Illinois State
University**



**Meaghan Ruttan -
University of Washington**



**Suong Nguyen -
Metropolitan State
University of Denver**



**Skyler Toy - Maryville
University of St. Louis**



**Shea Roccaforte - University of
New Mexico**

*Thank you to
our donors!*



\$1,000+

**Conoco Phillips Co
Denver Chapter
Philadelphia Chapter
Roberts Family
Foundation
Mesa East Valley
Michelle Boughton
Mary Erlenborn
Laura Mangan
Barbara Covington
Network for Good
Pamela Wenner
Michelle Venus
Stacey Craig
Cathy Allen
Mary Burns
Guinevere Moore
Susan Adams**

\$500-999

**Dallas Chapter
Stephanie Roscoe
Penelle Strum
Kristin Culliton
Mary-Claire Corcoran
Emily Nave
Helen Maleady
Laura Farney
Linda Harris
Monika Miles
Kendra Scott LLC
Gale Kreitzberg
Cindy Withrow
Karen Jacobson
Billings Chapter
Christie Lininger
Tyna Gaylor
Bambi Weber**

\$250-499

**Dianna Patton
Carrie Dostal
Mary Bonawitz
Melissa Sager
Beverly Anderson
Ames Chapter #158
Debbie Michael
Susanne O'Callaghan
Kathryn Schrader
Stephanie Searcy
Christi Olsen
Annette Christensen
Katharine Dill
Tina Polf
Mary Lou Carver
Wendi Christian
Grace Staten
Sue Christensen
Ann Deegan
Melody King
Kimberly Lyons
Shelby Williams**

\$100-249

**Luzmila Culpepper
Pamela Meadows
Melanie Norton
Sandy Edwards
Jeanmarie Leopold
Monica Malaski
Marie Ramkey
Catherine Yekenevicz
Catherine Mulder
Madeline Trimble
Anat Borodyansky
Alanna Abreu
District of Columbia Chapter
Diane Allison
Jeanette Longman
USA Hockey New England District
TIM AND JOANN THRONDSO
Sara Page
Becky Egan
Wendi Hall
I. Maxine Cohen
Vivian Moller
Stephanie Sommers
Cindy Dudden**

\$50-99

**Berranthia Brown
Neally French
Nancy Gililand
Ellie Gittelman
Cheryl Heitz
Susan Knox
Diane Lyngstad
Elinor Madigan
Margaret Munson
Jill Schafer
Denise Sciamanna
Kathryn Seltman
Jessica Shorney
Jan Spiegel
Fe Edita Velasco
Suzanne Wood, CPA
Ana Fernandez
Ann Neshek
Janice Sommers
Joan Weishaupl
Brittini Garringer
Laurie Brogan
Kathleen (Kay) Gotshall
Mary Marshall
Jennifer Leger
Vanessa Kubick
Marilyn Klein
Nicole Hopkins
Kelly Klomparens**

Up to \$49

**Dorothy Ashley
Bethany Duke
Stacey Kyle
Jerri Loveland
Joanie Sompayrac
Jessi Beeson
Kimberly Hencke
Marijke Hodgson
Shawndell LaFollette
Karen Lee
Susan LeVan
Leigh-Anne McClure
Brooke Moreland
Jessica Perkins
Jess Vento
Corey Brooks
Susan Barna
Tracey Bond-Weincyck
Rochelle Caballero
Tina Dandry Mayes
Bridget Donoghue
Prudence Dumon
Cara Fairneny
Alice Gorman
Lani Huck
Tamela Keeran
Michelle Masson**

**Kim Phillips
Deborah Reed
Renee Richards
Lara Schmutte
Nicole Sheets
Victoria Crenshaw
Kaitlyn Kirkhart
Judy Maira
Kristen Perkins
Patricia Hamilton
Barbara Sheetz
Valeri Kaae
Amy Landry
Sylvia Ayers
Carolyn Richie
Givinga Foundation Inc
Dessima Barnwell
Tracy Beeks
Sharada Bhansali
Janice Brady
Erica Brockus Martin
Theresa Copeland Roberson
Kathy Daly
Toni Davisson
Michelle del Pino
Michelle Faivre
Doris Gillespie
Stephanie Halle-Edwards
Ty Hendrickson
Angeline Huey
Tamara Isaacs
Lisa Johnson
Domina Kaler
Cynthia Kessler
Patti Mann
Kelley Nichols
Belva Ollis
Melissa Phillips
Leah Rodriguez
Betsy Scott
Julie Stokes
Willadene Tolmachoff
Lindsay White
Vonda Wilson**

**Over \$52,000
Raised for the
Foundation of
AFWA!**

Past National Presidents

1938-40	Ida S. Broo	Indianapolis	1981-82	Helen Shepherd, CPA	Los Angeles
1941-42	Mary C. Gildea	Chicago	1982-83	Jo Ann C. Dooley	Cincinnati
1943-44	Jane Goode	Los Angeles	1983-84	Lee G. Smart, CPA	Memphis
1944-45	Dorothy Miller Jones	Spokane	1984-85	Jean E. Krieger, CPA	Columbus
1945-46	Helen J. Maddex	San Francisco	1985-86	Barbara H. Brock, CPA	Buffalo
1946-47	Susie Sudderth	Atlanta	1986-87	Gail E. Schiffer, CPA	New York
1947-48	Evelyn Forsyth	Grand Rapids	1987-88	Mikki Folsom, EA	Spokane
1948-49	Marian A. Frye Doelker	Cleveland	1988-89	Patricia Morgan, CPA	Tacoma
1949-50	Alice H. Aubert	New York	1989-90	Rachel S. Query, CPA	Albuquerque
1950-51	Grace A. Dimmer	Detroit	1990-91	Gayle Powelson, CPA	Memphis
1951-52	Vera Jean Williams	Los Angeles	1991-92	Theodora A. Sherman, CPA	Seattle
1952-54	Marguerite Gibb	Seattle	1992-93	Marilyn E. Vito, CPA, CMA	Philadelphia
1954-55	Vivian Warner Matick	Muskegon	1993-94	Courtney Cowgill, CPA, CMA, CIA, CFE	Denver
1955-56	R. Grace Hinds, CPA	Indianapolis	1994-95	Shirley J. Laird	Anchorage
1956-57	Zosia Edwards Stege	Chicago	1995-96	Ivy F. Zito, CPA	Connecticut
1957-58	Alma Westerman Otto	District of Columbia	1996-97	Donna S. Reed, CGFM	Phoenix
1958-59	Carolyn Abernathy	New York	1997-98	Barbara L. Clark	Indianapolis
1959-60	Genevieve A. Michel, CPA	Seattle	1998-99	Regina Y. Rose, CPA	Birmingham
1960-61	E. Virginia Barnett	Houston	1999-00	Amy J. Norkus, CPA	Grand Rapids
1961-62	Betty Brown, President-Elect	Detroit	2000-01	Cindy Coleman Kessler, MBA	New Orleans
	Ann D. Snodgrass	Dallas	2001-02	Denisa Jones, CPA	Central Arkansas
	<i>(proceeded to Pres. 7/2/61)</i>		2002-03	Mary Feeny Bonawitz, PhD, CPA	West Palm Beach
1962-63	Erma A. Sembach	Cincinnati	2003-04	Betsy A. Scott, CPA	Kansas City
1963-64	Pearl M. Isham	Los Angeles	2004-05	Christi L. Olsen, CPA	Omaha
1964-65	Phyllis E. Peters, CPA	Detroit	2005-06	Debbie L. Michael, CPA	Billings
1965-66	Margaret L. Bailey, CPA	Denver	2006-07	Joy N. Barron	Birmingham
1966-67	Dr. Bernadine Meyer	Pittsburgh	2007-08	Karen J. Gunther	Boston
1967-68	Julia J. Kaufman	Cleveland	2008-09	Barbara W. Covington	Fort Walton Beach
1968-69	Naomi J. Nelson	Portland	2009-10	Stacey L. Craig, CPA	Phoenix
1969-70	Mary Louise Hawkins	Chicago	2010-11	Vivian L. Moller, CPA	Milwaukee
1970-71	Antoinette Peters, CPA	Cincinnati	2011-12	Monika P. Miles, CPA	Silicon Valley
1971-72	Madeline Draheim	New York	2012-13	Cheryl Heitz	Flagstaff
1972-73	Madeline Guimond	California Citrus Belt	2013-14	Catherine A. Mulder, CPA, CGMA	Ames
1973-74	Elizabeth A. Reid	Boston	2014-15	Berranthia C. Brown, CMI	Atlanta
1974-75	Pearl J. Mullvain	Phoenix	2015-16	Dianna M. Patton, CPA, CFP®	Richmond
1975-76	B. Jean Hunt, CPA	Birmingham	2016-17	Linda E. Harris, CPA	Billings
1976-77	Beryl H. Martin	Detroit	2017-18	Lori Kelley, CPA	Fort Walton Beach
1977-78	Joan M. Smith, CPA	Dayton	2018-19	Karyn Hartke, CPA	Northeast Florida
1978-79	Linda M. Canney, CPA	Seattle	2019-20	Laura Mangan, CPA, CMA, MBA	Mesa
1979-80	Dorothy Lombard, CPA	Sacramento	2020-21	Tyna Gaylor	District of Columbia
1980-81	Helen J. Nyenhuis, CPA	Grand Rapids			



Financial Report

FINANCIAL REPORT

July 1, 2020 - June 30, 2021

STATEMENT OF FINANCIAL POSITION- June 30, 2021

ASSETS	
Cash and cash equivalents	\$21,628.90
Investments	\$126,607.26
Accounts Receivable	\$11,855.42
Prepaid Expenses	\$7,333.05
Total Assets	\$167,424.63
LIABILITIES AND NET ASSETS	
Current Liabilities	
Accounts payable and accrued expenses	\$99,329.12
Deferred Revenue	\$118,567.64
Due to Foundation	\$3,206.20
Total Current Liabilities	\$221,102.96
NET ASSETS Unrestricted	
	(\$53,678.33)
Total Net Assets	(\$53,678.33)
Total Liabilities and Net Assets	\$167,424.63

STATEMENT OF ACTIVITIES - June 30, 2021 REVENUE

Membership Dues	\$172,533.87
Annual Conference	\$80,926.00
Contributions	\$23,165.93
Advertising & Product Sales	\$34,134.20
Royalties	\$5,806.87
Investment Income (realized & unrealized)	\$30,014.39
Chapter Reactivation Funds	\$43,733.79
Total Revenue and Support	\$390,315.05

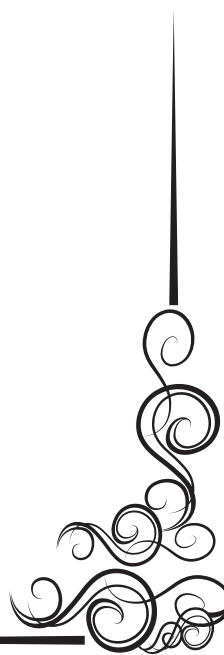
EXPENSES

Program Services	
Annual Conference	\$64,200.91
Publications and Website	\$13,110.78
Chapter and Foundation Support	\$43,613.55
Products	\$2,180.68
Total Program Services	\$123,105.92

Supporting Services	
Membership Services	\$59,314.54
Fundraising	\$17,445.42
Leadership	\$27,540.50
Management and General	\$37,504.12
Total Supporting Services	\$141,804.59

Total Expenses	\$264,910.51
Change in Net Assets	\$125,404.54

NET ASSETS, beginning of year	(\$179,082.87)
NET ASSETS, end of year	(\$53,678.33)



Corporate Partners

Corporate Partners not only financially support AFWA, they provide valuable programming and discounts to our membership. In addition, the alliances we form with other organizations allow AFWA to expand our reach and offer further benefit to our members.



Proud Publishers of



THOMSON REUTERS

